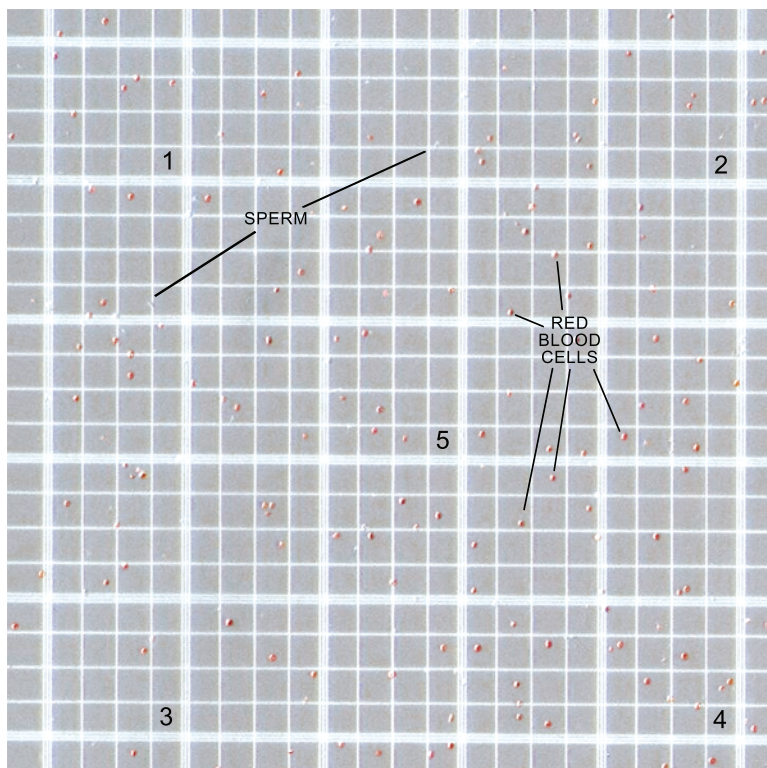


## SPERM COUNT PROTOCOL:

1. The specimen bottle (labeled POISON) is in a plastic bag inside the plastic transport box. Record the volume, marked on the side of the bottle. Less than 7.5 cc indicates loss of specimen, and the test should be repeated.
2. Suspend the fixed specimen by swirling gently. The fixative contains approximately one million aldehyde fixed red blood cells (rbc) per cc as an internal control.
3. Perform a standard hemacytometer count. Fewer than 10 rbc total in the five squares of the central grid shown below indicates the test should be repeated.



### 4. Calculations:

Sum of sperm in all 9 grids on the hemacytometer (one central grid is shown above)  
= \_\_\_ X 1,111 = total sperm in the fixed specimen; if no sperm are seen in the 9 grids,  
there are fewer than 2,222 sperm in the specimen.

This hemacytometer examination is approximately 100 times more sensitive than a "high power field" examination of a drop of semen under a cover slip.